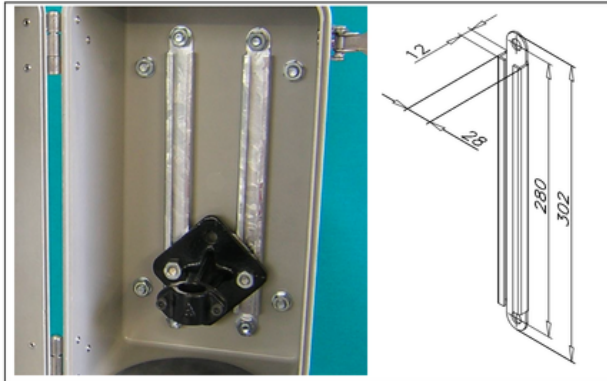


## 1 MOUNTING ACCESSORIES (INTERNAL)

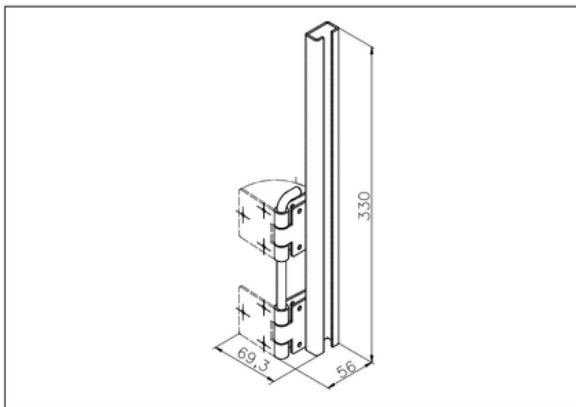
### 1.1 MS 50-QS-M

Mounting rail  
(see data sheet KDS10522 Application No. 4)



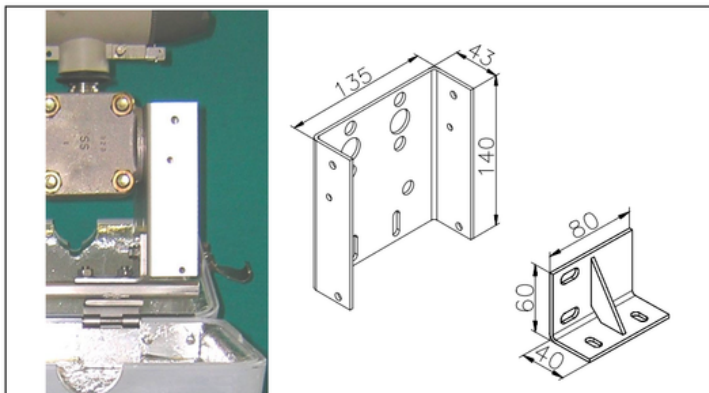
### 1.2 DSL

Double row of hinges and internal C-rail  
(see data sheet KDS10522 Application Nos. 2, 3, 5, 6)



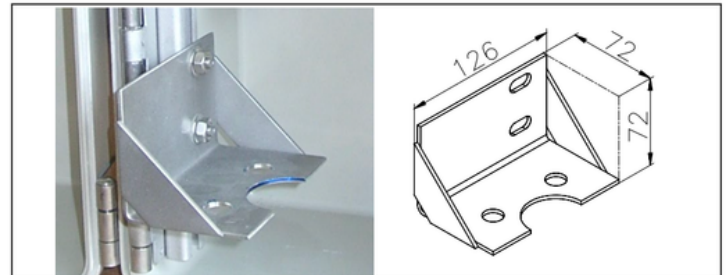
### 1.3 BT-1

(see data sheet KDS10522 Application No. 8)



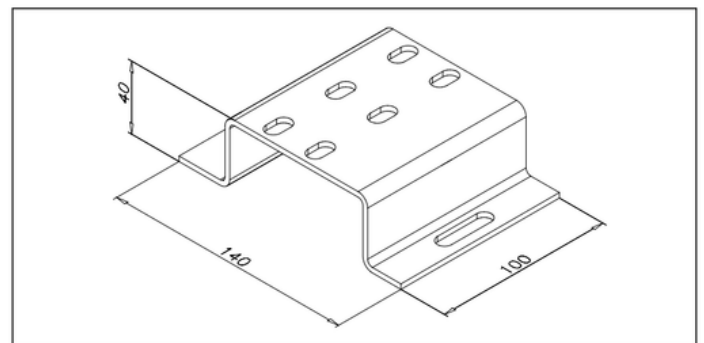
### 1.4 Bracket

(see data sheet KDS10522 Application No. 5)



### 1.5 Mounting Bridge

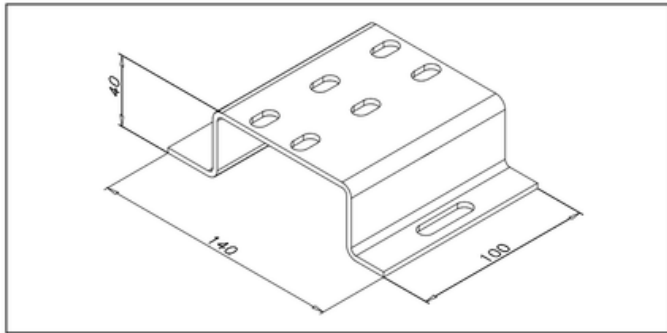
(see data sheet KDS10522 Application Nos. 1, 7)



## 2 MOUNTING ACCESSORIES (EXTERNAL)

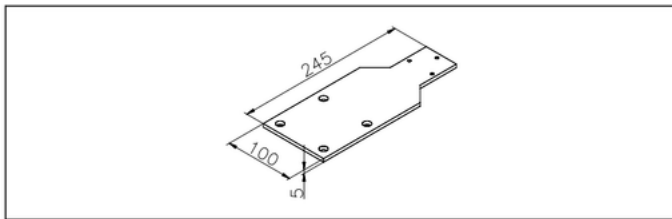
### 2.1 RS 21

Pipe mounting bracket for 2" pipe stand (see data sheet KDS10522 Application Nos. 4, 10)



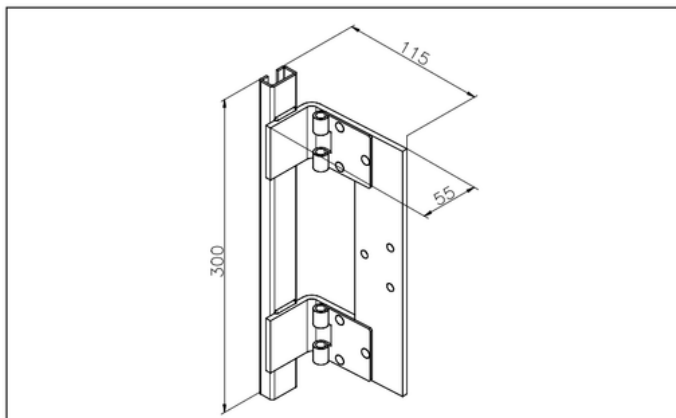
### 2.2 BR

Support for mounting of MINIBOX on 2" pipe stand (see data sheet KDS10522 Application Nos. 1, 7, 8)



### 2.3 BU

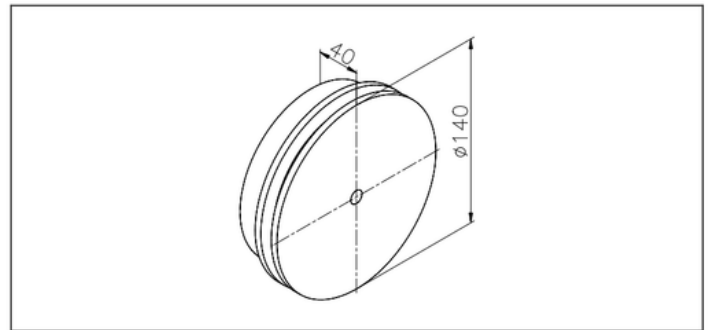
Universal mounting bracket with internal C-rail (DS4000; DS4001; DS4002;.....) (see data sheet KDS10522 Application Nos. 1, 7, 8)



## 3 ENTRY SEALS

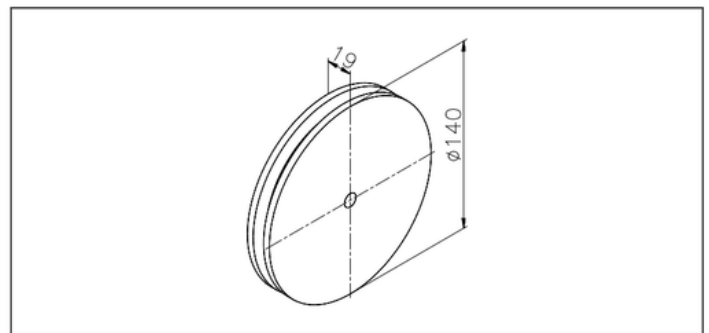
### 3.1 FLEXIPASS R

Entry seal for piping, 40 mm thick (see data sheet KDS10522 Application Nos. 1, 5, 7, 8, 9)



### 3.2 FLEXIPASS T

Entry seal for electronic parts of transmitter, 20 mm thick



## 4 MOUNTING SETS

### BU + BR

(see data sheet KDS10522 Application Nos. 1, 7, 8)

