

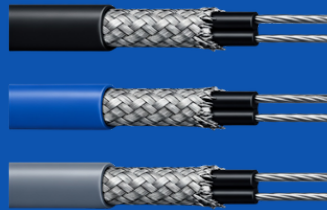
## Microprocessor Control Panels

- 10-40 Circuit, 304 ss, Nema 4x Enclosure
- 6 Week Lead Time



## Self Regulating Heat Tracing Cables

- 3-30 Watts, 185-450f Exposure Rating
- 120-277V
- Locally Stocked

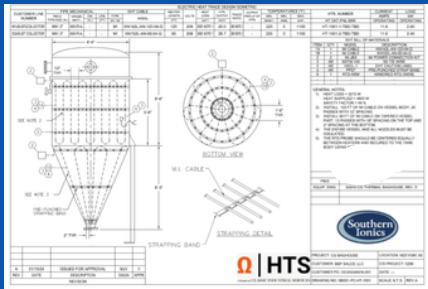


## Industrial and Commercial Grade Heat Trace Kits

- Class I Division 2
- 120-277V, Locally Stocked



## Heat Trace Isometrics, Road Map to Proper Installation



## Installation Audits, Commissioning Support, Troubleshooting, Smart Controls Integration



## Omega Steam Tracing Insulated Tubing

- 3/8" & 1/2" copper or stainless steel
- Easy to Install, 500' Spools, Locally Stocked



## Ω | TracerIQ

## Instrument Enclosures



## Single and Dual Tube SS Tubing Bundle

- Multiple O.D. & Wall Thickness
- Self Regulating Cable
- Temperature Ratings: 400° F, 650° F and 1100° F
- 80,000' Stocked

